

AIR CONDITIONING (HVAC) WORK AT REGIONAL OFFICE, KADAMKUAN, PATNA – 800001

Renovation Works Including HVAC, Electricals, Interior Furnishing work  
at Regional Office, Pirmuhani, Kadamkuan, Patna – 800001

**THE ORIENTAL INSURANCE COMPANY LTD.  
REGIONAL OFFICE, PIRMUHANI, KADAMKUAN, PATNA.**

**TENDER DOCUMENT**  
**[ PART – II ]**  
**[ Financial Bid ]**  
**[ SCHEDULE OF QUANTITIES AND DRAWINGS ]**  
**TENDER NO. : RO/Estate/2018-19/07**

Architect

**IDEATION DESIGN STUDIO PVT LTD**

Address : 1 st Floor, Shambhu Nath Plaza,  
New Dakbunglow Road, Patna – 800001  
Contact: +91-9525 906 770, 0612-2216779

Date : 18/01/2019

Total Number of Financial Bid = 13 PAGES

Financial Bid (BOQ) = 09 pages

Total Number of Dawings = 04 Pages

**THE ORIENTAL INSURANCE COMPANY. LTD.**  
**PIRMUHANI, KADAMKUAN, PATNA-800003.**

<b>SUMMARY</b>			
<b>AIR CONDITIONING WORK AT REGIONAL OFFICE, PATNA</b>			
<b>SL. NO.</b>	<b>WORKS</b>	<b>AMOUNT</b>	<b>TOTAL</b>
<b>1</b>	<b>Air Conditioning Work</b>		
	Cost of the Works		
<b>2</b>	<b>Interior Furnishing Works</b>		
	Cost of the Works		
<b>TOTAL COST OF THE WORKS</b>			

**Note : The Rates quoted should be inclusive of all Taxes**

**ITEMS OF AIR CONDITIONING & ELECTRICAL WORKS**

Sr. No	Description	Unit	QTY	RATE	AMOUNT
<b>A</b>					
1.0	<b>WIRING</b>				
1.7	Wiring for circuit/ submain wiring along with earth wire with the following sizes of FR PVC insulated copper conductor, single core cable in surface/ recessed with PVC conduit as required <b>Make : Havells/Polycab/Finolex</b>				
1.7.3	2X 4 sq. mm + 1 X 4 sq. mm earth wire (1 and 1.5 Ton AC)	Meter	200		
1.7.11	2X 6 sq. mm + 1 X 6 sq. mm earth wire (2 Ton AC)	Meter	345		
1.7.12	4X 10 sq. mm + 2 X 10 sq. mm earth wire (From Panel To DB)	Meter	50		
2.0	<b>MCB &amp;DB</b>				
2.9	Supplying and fixing following Way horizontal type three pole and Neutral sheet steel MCB Distribution board ,415 volts on surface/Recess complete with tinned copper bus bar, Earth bar,Neutral bus bar, din bar interconnection,powder paint inc "C" curve,MCB Suitable for inductive loads of following poles in the existuding etc.. as required.(But without Mcb,Rccb,isolater) <b>Make : Havells/L&amp;T/Legrand</b>				
2.9.1	4 Way (4+12)single door Horizontal way	Each	4		
2.12	Supplying and fixing following rating 240/415 volts, "C" curve,MCB Suitable for inductive loads of following poles in the existing MCB DB complete with connections, testing and commissioning etc. as required. <b>Make : Havells/L&amp;T/Legrand</b>				
2.12.1	6/32 A Single Pole <b>Make : Havells/L&amp;T/Legrand</b>	Each	22		
2.12.7	63 A TPN <b>Make : Havells/L&amp;T/Legrand</b>	Each	4		
2.19	Suppling and fixing 25A, 240V SPN industrial type socket outlet ,with 2pole and earth, metal enclosed plug tope alongwith 25A C curve MCB in sheet steel enclosure, on surfaceor recess, with chain metal cover for the socket outlet and complete with connections , testing and commissioning etc. as required.	Each	22		
2.20	Providing and fixing M.V. danger notice plate of 200 mm X 150 mm, made of mild steel, at least 2 mm thick, and vitreous enameled white on both sides, and with inscription in single red colour on front side as required. <b>Make : Havells/L&amp;T/Indoasian.</b>	Each	1		
<b>A</b>	<b>TOTAL AMOUNT ( A )</b>				

<b>B</b>	<b>SPLIT AC UNIT - ( 2.0 TR, 3STAR)</b>				
1	Suply, instalation, testing and commissioning of 2 Ton (24000 BTU/hr) Aircooled Mega Hiwall type airconditionr unit complete with blower section with motor and drive,DX Copper coil,active carbon filter for remove odour, and LCD remote control type (Condensing unit mounted on wall brackets ).or on surface as per site requirement) with extended liquid/vaporub line (different length) pvc condensate drain pipe on proper size run on surface through walls, colomuns, copper pie power cable etc. inside proper size duct chanel (Adamjee-dura), complete with material hardware, fittings, fixture masonary works such as cutting of grooves holes etc. and making the cement good with cement plaster, finish paintig complete all as per site condition including 5KVA stabilizer (Microtech make or equivalent) and 3x2.5 copper wire make havells. <b>MAKE : CARRIER / DAIKIN / VOLTAS / LLOYD or Equiv.</b>				
<b>B1</b>	<b>SPLIT AC UNIT - ( 1.0 TR / 1.5 TR, 3STAR)</b>	Nos.	14		

2	Supply, installation, testing and commissioning 1.5Ton (18000/12000BTU/hr) 3star cooling capacity remote condense type (Condensing unit mounted on wall brackets or on surface as per site requirement) with extended liquid/vapor line (different length) pvc condensate drain pipe on proper size run on surface through walls, columns, copper pipe power cable etc. inside proper size duct channel (Adamjee-dura), complete with material hardware, fittings, fixture masonry works such as cutting of grooves holes etc. and making the cement good with cement plaster, finish painting complete all as per site condition including 4KVA stabilizer (Microtech Make or equivalent) and 3x2.5 copper wire make havells. <b>MAKE : CARRIER / DAIKIN / VOLTAS / LLOYD or Equiv.</b>				
<b>B2</b>	<b>SPLIT AC UNIT - ( 1.0 TR, 3STAR)</b>	Nos.	2		
<b>B3</b>	<b>SPLIT AC UNIT - ( 1.5 TR, 3STAR)</b>	Nos.	6		
<b>B</b>	<b>TOTAL of SPLIT AC UNITS</b>	<b>B1 + B2 + B3</b>			
<b>C</b>					
1.1	Supply ,Installation, Testing and Commissioning hard copper refrigerant pipes with supports, fitting etc. for Hi-Wall Split units.				
a	2 TR	RM	310		
1.2	<b>Drain Piping</b>				
	Supply & Fixing of hard drawn PVC drain piping complete with fittings,supports, 6mm thick closed cell elastomeric insulation				
a	25 mm	RM	80		
1.3	Supply installation testing and commissioning of interconnecting communication cable from indoor to outdoor enclosed with hard PVC conduit with necessary support	RM	310		
1.4	Supply & fixing of Outdoor Stand With Vibration Isolater V.I. pad. ISI Marka.	Set	22		
<b>C</b>	<b>TOTAL of C</b>				
<b>D</b>	<b>EARTHING</b>				
1.1	Supply and installation of Earthing for Electrical equipment of for chemical earthing Having copper bonded electrode of 80 mm dia. and 3mts. Long 50 kg back fill compound makes proper digging and soil filling connecting testing and commissioning. Connecting from earth to required point by 6 sq. mm copper conductor	Nos	3		
<b>D</b>	<b>TOTAL of D</b>				

<b>E</b>	<b>MAIL PANEL And EXTERNAL POWER CABLING</b>				
<b>E1</b>	<b>MAIN PANEL</b>				
	<b>INCOMER:</b>				
	1 Nos 260A TPN, 50kA, MCCB's with microprocessor based releases for overcurrent, shortcircuit and earth fault, with isolable neutral, ON indication, 1 no. multifunction digital meter (showing all power parameters), with selector switch, matching cast resin CT's.				
	63A, Changerover switch				
	<b>Main BUS BAR</b>				

	A set of TPN cooper bus bar rated for 300A (after considering all necessary deratings) 3 phase 4wire, 50Hz.				
	INTERNAL WIRING OF PANEL 35 SQ. MM COPPER CABLE				
	<b>DG BUS BAR</b>				
	A set of TPN cooper bus bar rated for 100A (after considering all necessary deratings) 3 phase 4wire, 50Hz.				
	<b>OUTGOING</b>				
	8 nos 40 A TPN MCB's, 25 kA with indication lamps				
	6 nos 40 A DP MCB's, 25 kA with indication lamps				
	Other items such as				
	1 Lot of control Copper wiring	Set	1		
<b>E2</b>	<b>XLPE POWER CABLE (From Pole To Panel)</b>				
	Supply,installation,testing and commisioning 3.5 core,120 sq.mm Alluminium armoured XLPE power cable Thimbling in both sitde of cable	RM	25		
<b>E</b>	<b>TOTAL of E</b>			<b>E1 + E2</b>	
<b>F</b>	<b>TOTAL OF AIR CONDITION WORKS</b>			<b>A + B + C + D + E</b>	

### ITEMS OF CARPENTRY & ALUMINUM WORKS

SI No.	Items	Unit	QTY	RATE	Total Cost
<b>G</b>	<b>Furnishing Work</b>				
	<b>Glazed Partitioning (Fixed) with Aluminum Framming</b>				
<b>G1</b>	Providing and Fixing of 5.5 mm thick Glazing (clear Float Glass panel) and 6mm thick Laminated MDF Board in approved shade/specification, fixed in Powder coated Aluminum doors/windows/shutters / Partition frames in as approved shade with EPDM rubber / neoprene gasket etc. complete as/architectural drawings and the directions of the Architect in Charge. ( <b>Note : Please refer drawings DT-101A &amp; 201A )</b>	Sq-ft	80		
	<b>Glass Doors in with Aluminum Framming</b>				
<b>G2</b>	Providing and Fixing of 5.5 mm thick Glazing (clear Float Glass panel) fixed in Powder coated Aluminum DOOR frames in as approved shade with EPDM rubber / neoprene gasket etc. complete as/architectural drawings and the directions of the Architect in Charge. Cost includes all standard fittings, Handles on both sides, Lock-sets, Door closure, etc.(Floor Spring not required, Door frame to be fixed with Butt Hinges or Pivot hinges on side partition frame) ( <b>Note : Please refer drawings DT-101A &amp; 201A )</b>	Sq-ft	78		

G3	<b>Wooden Paneling / Boxing for AC</b> Providing and fixing of Wooden paneling or Boxing On or over Beams from Column to Column (as equired) over RCC Column upto 2'-0" in height and width as/site condition at Ceiling level to support SPLIT AC Indoor unit, where ever no solid wall or Wooden partition is available (Location may be confirmed with The Architect in Charge). Paneling made of 19mm thick BWP Grade Board or Ply fixed over Ceiling / Beam & Column with 1" x 1.5" solid wood section at distance of not more than 2'-0" in any direction. Wooden Paneling including both side edges to be finished in 1MM thick Laminates as/ specification and shade as approved.	Sq-ft	100		
H	<b>TOTAL AMOUNT ( H )</b>	<b>G1 + G2 + G3</b>			

## MAKE LIST

**Oriental Insurance Company Limited, Patna / Empanelled Architect / Consultants** reserves the right to select any particular make from the list given below to be used in the project work without any extra cost adjustment. Department's decision will be binding on the contractor.

It's a General MAKE LIST for all Kind of **Wooden-Aluminum works / HVAC / Electrical works**. Contractor will pick The Make name according to the Items as mentioned in BOQ required for the currant site only. The preference of makes shall be in the order as mentioned below. The contractor should quote for the make mentioned first followed by other alternates in their order.

Sr. No.	Details of Equipment/ Material	Manufacturer's Name
<b>I ) Carpentry / Aluminum Works</b>		
1	Commercial plywood	GreenPly / Austin / Century / Alpro
2	Marine plywood	GreenPly / Austin / Century / Alpro
3	Partition framework	SAINT GOBAIN - Gypsteel Ultra - Floor & Ceiling Channel/ 'C' Stud/ Fixing Channel/ Ceiling Section/ Perimeter Channel/ Intermediate Channel/ Ceiling Angle or Equivalent
4	MDF	Duratuff / Nuewood or Equivalent
5	Soft board	LOCAL as available
6	Flush door	GreenPly / Austin / Alpro or Equivalent
7	Laminate	GreenLam / Heritage / Marino / Century
8	Veneer	GreenLam Decowood / Century / Wood Crest - GreenPly
9	Adhesive for wood	Fevicol SH / Fevicol Marine / Fevicol Hyper
10	French Polish	LOCAL
11	Melamine finish	Asian / Berger / Nerolac or equivalent
<b>Hardware</b>		
12	Floor Spring for frameless doors	Ebco / Olive / Godrej / Ozone / QUBA
13	floor Spring for normal doors	Ebco / Olive / Godrej / Ozone / QUBA
14	Door Closure	Ebco / Olive / Godrej / Ozone / QUBA
15	Door Stopper	Local
16	Patch Fitting	Ebco / Olive / Godrej / Ozone / QUBA
17	Channels	Ebco / Olive / Godrej / Ozone / QUBA
18	Glass Connectors	Ebco / Olive / Godrej / Ozone / QUBA
19	Glass Handles	Ebco / Olive / Godrej / Ozone / QUBA
20	Lever Handles (for flush door)	Ebco / Olive / Godrej / Ozone / QUBA
21	Cabinate Handles	Ebco / Olive / Godrej / Ozone / QUBA
22	Knobs	Ebco / Olive / Godrej / Ozone / QUBA
23	Door Hinges-	Ebco / Olive / Godrej / Ozone / QUBA
24	Shutter Hinges	Ebco / Olive / Godrej / Ozone / QUBA
25	Latch	Ebco / Olive / Godrej / Ozone / QUBA
26	Tower bolt	Local
27	Cylindrical lock	Ebco / Olive / Godrej / Ozone / QUBA
28	Door Lock	Ebco / Olive / Godrej / Ozone / QUBA
29	Drawer Lock	Ebco / Olive / Godrej / Ozone / QUBA
30	Storage Lock	Ebco / Olive / Godrej / Ozone / QUBA
31	Magnetic Ball Catch	Ebco / Olive / Godrej / Ozone / QUBA
32	Drawer Guide	Ebco / Olive / Godrej / Ozone / QUBA
33	Ceiling mounted projector stand	Ebco or Equivalent
34	Screws	GKW / LAXMI or equivalent
35	Luster paint	Asian / Dulux / Nerolac
36	Plastic Paint	Asian / Dulux / Nerolac
<b>II) HVAC ITEM:</b>		
1	Chiller	Blue Star / York / Daikin / Dunham Bush / Carrier
2	Chilled/ Condenser Pumps:	Kirloskar / Bell & Gossett / Wilo (Mather+Platt) / Grundfos
3	Cooling Towers	Nihon Spindal / Baltimore / Evepco / Advance
4	Hot Water Generator	Rapid Cool / Emerald / Sandhu
5	Air Handling Units & TFA:	
i)	Air Handling Units	VTS / Edgetech / Zeco / System Air / Crystal Air
ii)	Cooling Coil	As per manufacture standered
iii)	Fan	Kruger / Nikotra /Comferi Equivalent with AMCA / Eurovent Certification
6	Fan Coil Unit & Cassette Unit	Sinko / Carryaire / Trane
7	<b>Split AC</b>	<b>CARRIER / DAIKIN / VOLTAS / LLOYD or Equiv.</b>
7A	<b>Stabilizers for Split AC</b>	<b>MICROTEK / V-GUARD / SEN &amp; PANDIT / LUMINOUS</b>

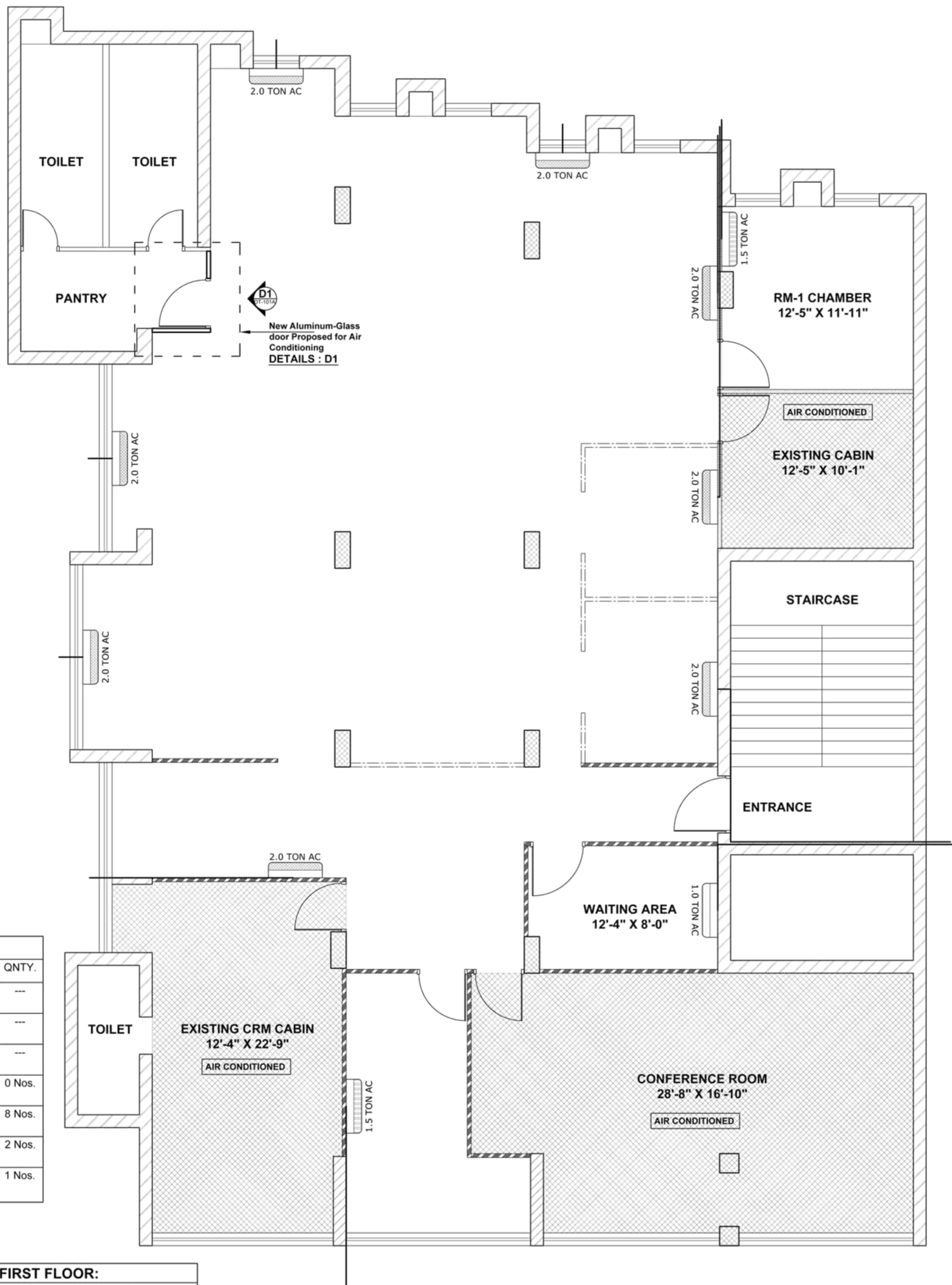
8	Plate Type Heat Exchanger	Alpha / GEA
9	Oil Type Heater	Emerald / Rapid Cool / KEPL
10	M.S. Pipes:	
i)	Upto 150mm dia	Tata / Jindal Hissar / Sail
ii)	Above 150mm dia	Tata / Jindal Hissar / Sail
11	Butterfly Valves	Advance / Audco / Danfoss
12	Motorized Butterfly Valve	Belimo / Danfoss / Siemens / Oventrop
13	Pressure independent control valve (PICV)	Danfoss / Oventrop / Siemens
14	Check Valves	Advance / Audco / Kitz
15	Ball valve	Zoloto / Audco / RC / Emerald
16	Balancing Valves	Danfoss / Audco / Advance / Oventrop
17	2-way Modulating Valves with Thermostat	Belimo / Honeywell / Siemens
18	2-way on off valve with thermostat for FCU	Belimo / Honeywell / Siemens
19	Expansion Bellows	Easyflex / Resistoflex / Areaflex / Dunlop
20	Pot/Y-Strainers	Sandhu / Rapid Cool / Sant
21	Suction Guide with Strainer	Anergy / Armstrong / Emerald / Sandhu
22	BTU meter	Belimo / Siemens / Honeywell / Shenitech
23	RH Sensor	Belimo / Honeywell / Siemens / Omnicron
24	Thermostat	Danfoss / Belimo / Honeywell / Siemens / Anergy / Omnicron
25	Pressure Gauge (Industrial Type)	Feibig / H. Guru / Emerald
26	Differential Pressure Switch	Siemens / Rapid Control / Anergy / Sant
27	Thermometers	Feibig / H.Guru / Emerald
28	Closed Expansion Tank	Anergy / Bell & Gossett / Sandhu / Emerald
29	Air Separator	Anergy / Emerald / Sandhu
30	Auto Air Vent	Anergy / Rapid Cool / Oventrop / Emerald
31	Plug Valve	Anergy / Rapid Cool / Emerald
32	G.I. Sheets	Sail / Tata / Jindal
33	MS. Sheets	Hindalco / Balco / NALCO
34	Fire Dampers	Systemair / Carryaire / Ruskin / Greenheck
35	Damper Actuator	Belimo / Semines / Sinider
36	Grills/Diffusers	Systemair / Carryaire / Bright Flow / Tristar
37	Fresh Air Louvers	Systemair / Carryaire / Bright Flow / Tristar
38	Nitrile Rubber	K-Flex / Armacell / Aerocell
39	Protective Coating over insulation (Lag coating)	CISBOND / Pidilite / Foster / Idendan
40	Glass Wool	K-Flex / UP TWIGA / Owens Corning / Kimmco
41	Insulation Adhesive	Pidilite / Foster / CISBOND / Henkel
42	Factory Made ducting	Ductofab / Zeco / Technofab / Educt
43	Filters (in Air-conditioning system)	Thermodyne / Mechmark / Camfil / AAF
44	Ventilation Fans:	
i)	Tube/Vane Axial	Kruger/System Air/ Greenheck
ii)	Inline (Centrifugal)	Kruger/System Air/ Carryaire / Ostberg
iii)	Propeller Fans	Kruger/ GE / Alstom / Crompton
45	Air Washers/Scrubber:	
i)	Air Washer/Scrubber	Edgetech / Zeco / System Air / VTS / Crystal Air
ii)	Fan	Kruger / Nikotra / Comferi / Equivalent with AMCA Certification
iii)	Pump	Kirloskar / Beacon
iv)	Filters	As per manufacturer's standard
46	Heat Recovery Wheel units	DRI / Ostberg / Flaktwood
47	Expanded Polystyrene (EPS)	Styrene / FGP / Pilkington / Indian Packaging
48	Vibration Isolator	Easyflex / Resistoflex / Dunlop
49	Anchor/Fastener	Hilti / Fisher / Raw plug
50	Duct Support	Gripple / GPL / Easyflex Zip-Clip
51	PUF Saddles	Lloyds / Beardsell / Malanpur
52	FCU link	ATS (CSI) / Oventrop / CIM
53	Sound Attenuator	Ruskin / Systemair / Trox
54	CO Sensor	Siemens / Omnicron / Johnson
55	VFD	Danfoss / ABB / Siemens / Fuji
56	CO2 Sensor	Siemens / Omnicron / Johnson
57	Demand Ventilation System	
i)	Equipment	Conaire / Glenstorm / Tristar
ii)	Motorized Assembly	Conaire / Glenstorm / Tristar
iii)	Integrator	Conaire / Glenstorm / Tristar
58	High Density PVC Pipe	Finolex / Kissan / Prince / Supreme
<b>   ) ELECTRICAL WORKS</b>		
<b>Details of Equipment/ Material</b>		<b>Manufacturer's Name</b>
<b>Internal Electrical Works</b>		
1	GI pipes	Jindal (Ghaziabad)/ Surya / Tata



2	M S Conduit	AKG / BEC / RMCON
3	Heavy Duty Accessories for MS Conduit	Rama Steel Tube / Sharma / Seema
4	PVC Conduit & Accessories	Polypack / BEC / AKG
5	Switch Socket Accessories	Legrand / MK / Schneider / Siemens / Crabtree
6	Copper conductor PVC insulated wires (FRLS)	Polycab / Havells / RR Kable / Parmount
7	Data Outlet	Molex / D Link / Avaya
8	MCB/ELCB/RCCB/DB	MDS / Hager / Schneider/ Siemens / ABB
9	Timers & Contactors to be mounted in DB's	L&T / Siemens / GE / Schneider
10	MV Contactors/Timer/ Starters	L&T/Siemens/GE/Schneider
11	Protective Relays	ABB/ Siemens/ L&T/ Schneider
12	kWh Meters (Electronic Digital type)/ Multifunction Meter/Ammeter/Voltmeter	Conzerv /Neptune/ L&T /Trinity
13	LT Cables	Universal/Polycab/ Havells/Gloster
14	Indication Lamps/Push Button	L&T/ BCH/GE
15	Light Fixtures	Refer lighting section
16	Ceiling/Exhaust Fans	Crompton Greaves/Orient/ Khaitan/ Usha
17	Cable Tray	Slotco/ Profab/MEM/OBO
18	UPS	APC/Emerson/Socomec/Numeric
19	Polycarbonate Junction Boxes	Hensel/ Clipsal/Mennekes
	<b>External Electrical Works</b>	
20	HT Panel Boards	Siemens/ ABB/ L&T/ Schneider
21	Power Transformers	Schneider/ ABB/Crompton Greaves
22	Transformers (Distribution)	Recon/Schneider/ABB/Crompton Greaves /Kiroskar
23	Relays	ABB/Siemens/ L&T/ Schneider
24	HT XLPE 33 KV/ 11 KV Cable	Polycab/ Havells/ Universal/ Gloster
25	HT Cable Termination/ Jointing Kit	Raychem/3M
26	L.T. Panel Boards/Sub-Panel/ Feeder Pillar	SPC Electrotech/ Tricolite/ Adlec
27	ACB	Schneider (MVS)/ L&T (U Power)/ ABB (E-Max)/ Siemens (3WL)
28	MCCB	Schneider (CVS)/ L&T (D-Sine)/ ABB (T-Max)/ Siemens (3VA)
29	Capacitor	L&T/Siemens/Vishey/Epcos/Ducati
30	Control Cable	Universal/Polycab/ Havells/Gloster
31	Selector Switch	Rishab – L&T/ Kaycee/ Siemens/ C&S
32	CT/PT	AE/Gilbert / Precise/ C&S/
33	Aviation Light	Bajaj/Wipro/Philips
34	Photo Chromatic Switch	Bajaj/Wipro/Philips
35	Lightning Arrestor	DEHN/ Furse/ OBO
36	Surge Arrestor	DEHN/ OBO/ Furse
37	Annunciation Panel	Crompton/ Schneider/ Kirloskar/ ABB/ Siemens
38	APFCR	L&T/Siemens/Ducati/ Schneider
39	Terminal Blocks	BCH/Industrial Control/ L-Mak/ Jainson
40	Change Over Switch	L&T/Socomec/Siemens/Emerson
41	Bus Duct/Rising main (Sandwich)	L&T (Henikwon)/ Godrej/ Schneider/C&S
42	Rising main (Sandwich)	L&T (Henikwon)/ Godrej/ Schneider/C&S
43	Bus bar	Jindal/Indalco/Century
44	PLC	Allen Bradley /Siemens/ Schneider
45	Invertor	Luminous/Microtec/Sukam
46	Chemical Earthing	Vnt/ Tereplus/ Erico

**REVISION R1 :-**

1. 1.5 TON AC ADDED IN RM-1 CHAMBER.



LEGEND			
Sr. No.	SYMBOL	DESCRIPTION	QNTY.
01.	[Symbol]	FALSE CEILING (Lvl + 8'-2")	---
02.	[Symbol]	FULL HEIGHT PARTITION	---
03.	[Symbol]	LOW HEIGHT PARTITION	---
04.	[Symbol]	3.0 Tr SPLIT AC	0 Nos.
05.	[Symbol]	2.0 Tr SPLIT AC	8 Nos.
06.	[Symbol]	1.5 Tr SPLIT AC	2 Nos.
07.	[Symbol]	1.0 Tr SPLIT AC	1 Nos.

AC LOAD CALCULATIONS - FIRST FLOOR:	
#	Total Area for AIR CONDITIONING work : 2340 sq-ft.
#	Total capacity of SPLIT AC required : 18.72 Ton.
#	Total capacity of SPLIT AC proposed : 20.00 Ton.

**FIRST FLOOR PLAN**

**GENERAL NOTES :-**  
 A. THIS DRAWING AND DESIGN IS THE PROPERTY OF IDEATION DESIGN STUDIO PVT. LTD. PARTIAL OR WHOLE REPRODUCTION WITHOUT THEIR WRITTEN PERMISSION IS PROHIBITED.  
 B. ARCHITECT MUST BE INFORMED OF ANY ADDITIONAL INFORMATION REQUIRED OR IN CASE OF ANY DISCREPANCY BEFORE COMMENCEMENT OF WORK ON SITE.  
 C. THIS DRAWING IS TO BE READ IN CONJUNCTION WITH THE DESIGNER'S SPECIFICATIONS AND CONDITIONS OF CONTRACT.  
 D. ALL DIMENSIONS ARE IN INCHES.  
 E. ALL DIMENSIONS ARE TO BE READ NOT SCALED.

**REMARKS :-**

**Project :-**  
**ORIENTAL INSURANCE COMPANY LIMITED, PATNA.**  
 Regional Office, Ranjendra Path, Kadamkuan, Patna-800003  
 [ Office Interior Renovation Fit-Out Works ]

**Drawing Title:**  
**SPLIT AC LAYOUT PLAN**  
**FIRST FLOOR**  
 Drg No :- ID-18022-FLP-SR-101A      Rev No :- R1  
 Approved : AMBUJ  
 Checked : AK  
 Dealt : NA  
 Scale : NTS  
 Date : 20-09-2018

North :-

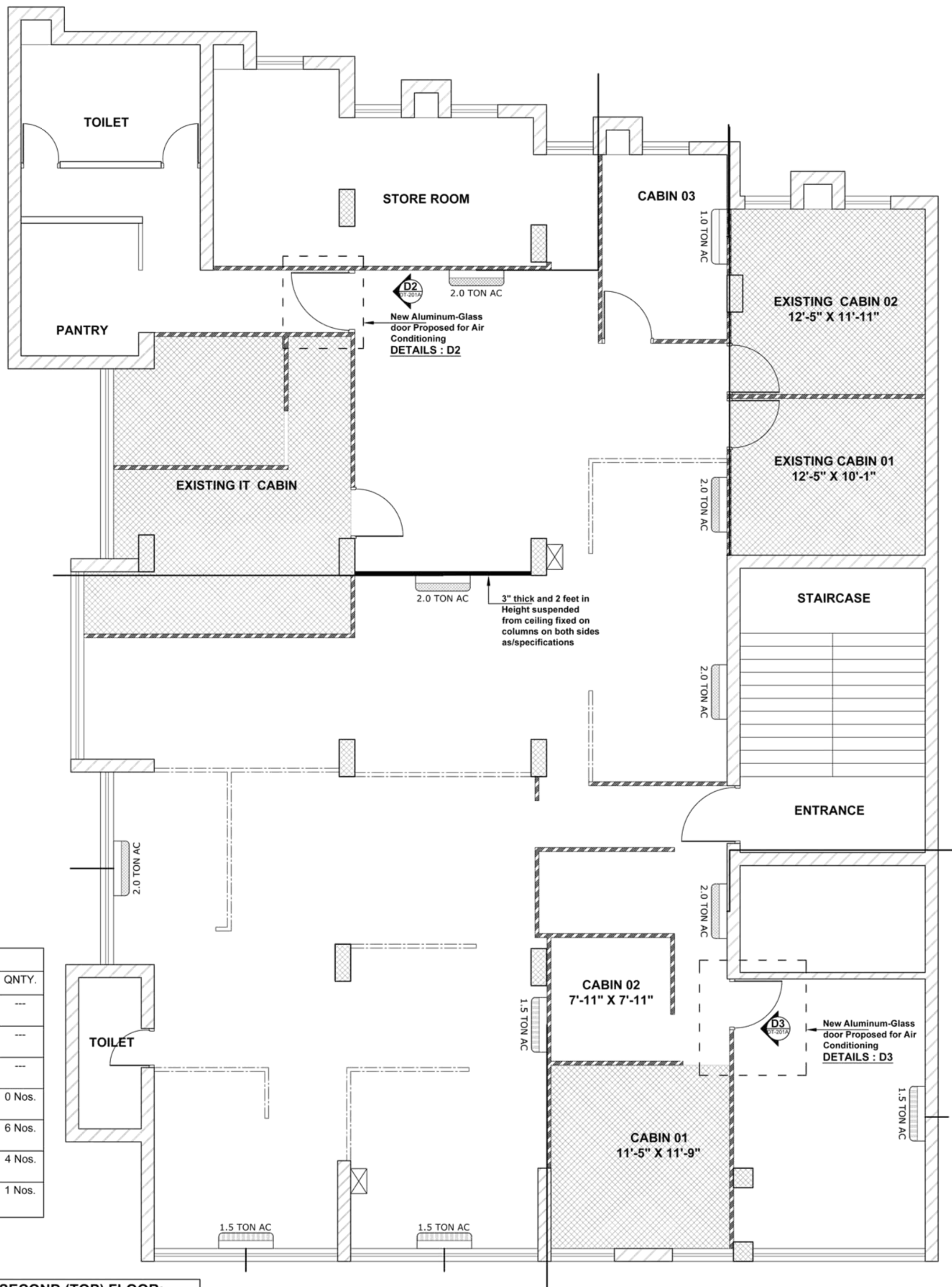
**ARCHITECT :**  
**IDEATION DESIGN STUDIO Pvt. Ltd.**  
 ARCHITECTS & INTERIOR DESIGNERS  
 1st Floor, Shambhu Nath Plaza,  
 New Dakbungalow Road, Patna-800001.  
 Mobile: +91-9525906779, +91-612-2216779.  
 e-mail Id: info@ideationstudio.in www.ideationstudio.in

**Services Consultant :**  
**ACE Engineering, Patna**  
 Contact : 7903702565 E-mail : arvind.1358@rediffmail.com

**Structural Consultant :**



1. 1.5 TON AC REMOVED FROM STORE.



Sr. No.	SYMBOL	DESCRIPTION	QNTY.
01.	[Cross-hatch pattern]	FALSE CEILING (Lvl + 8'-2")	---
02.	[Diagonal lines]	FULL HEIGHT PARTITION	---
03.	[Dotted pattern]	LOW HEIGHT PARTITION	---
04.	[Horizontal lines]	3.0 Tr SPLIT AC	0 Nos.
05.	[Vertical lines]	2.0 Tr SPLIT AC	6 Nos.
06.	[Diagonal lines (top-left to bottom-right)]	1.5 Tr SPLIT AC	4 Nos.
07.	[Diagonal lines (top-right to bottom-left)]	1.0 Tr SPLIT AC	1 Nos.

AC LOAD CALCULATIONS - SECOND (TOP) FLOOR:	
#	Total Area for AIR CONDITIONING work : 2200 sq-ft.
#	Total capacity of SPLIT AC required : 17.60 Ton.
#	Total capacity of SPLIT AC proposed : 19.00 Ton.

**SECOND FLOOR PLAN**

**GENERAL NOTES :-**  
 A. THIS DRAWING AND DESIGN IS THE PROPERTY OF IDEATION DESIGN STUDIO PVT. LTD. PARTIAL OR FULL REPRODUCTION WITHOUT THEIR WRITTEN PERMISSION IS PROHIBITED.  
 B. ARCHITECT MUST BE INFORMED OF ANY ADDITIONAL INFORMATION REQUIRED OR IN CASE OF ANY DISCREPANCY BEFORE COMMENCEMENT OF WORK ON SITE.  
 C. THIS DRAWING IS TO BE READ IN CONJUNCTION WITH THE DESIGNER'S SPECIFICATIONS AND CONDITIONS OF CONTRACT.  
 D. ALL DIMENSIONS ARE IN INCHES.  
 E. ALL DIMENSIONS ARE TO BE READ NOT SCALED.

**REMARKS :-**

**Project :-**  
**ORIENTAL INSURANCE COMPANY LIMITED, PATNA.**  
 Regional Office, Ranjendra Path, Kadamkuan, Patna-800003  
 [ Office Interior Renovation Fit-Out Works ]

**Drawing Title:**  
**SPLIT AC LAYOUT PLAN SECOND FLOOR**  
 Drg No :- ID-18022-FLP-SR-102A Rev No :- R1  
 Approved : AMBUJ  
 Checked : AK  
 Dealt : NA  
 Scale : NTS  
 Date : 20-09-2018

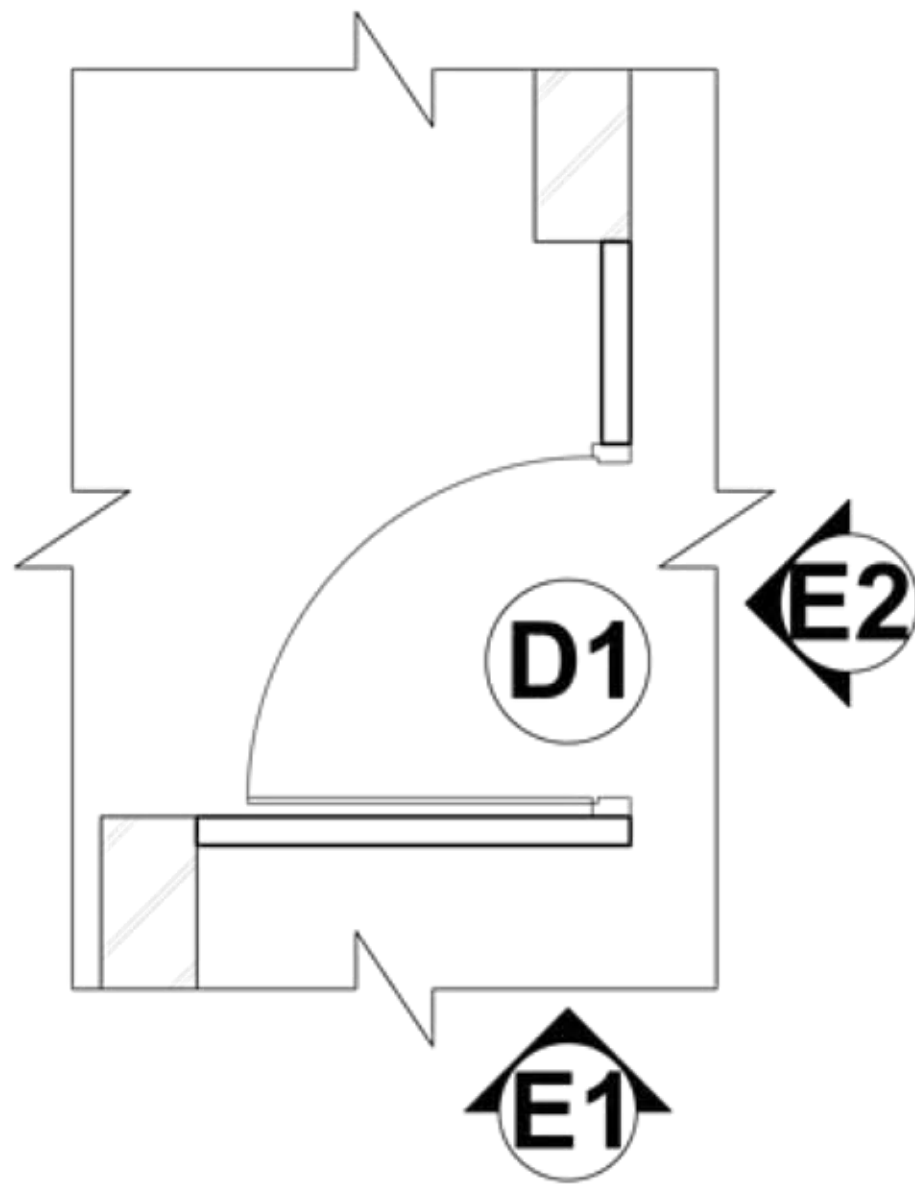
North :-

**ARCHITECT :**  
**IDEATION DESIGN STUDIO Pvt. Ltd.**  
 ARCHITECTS & INTERIOR DESIGNERS  
 1st Floor, Shambhu Nath Plaza,  
 New Dakbungalow Road, Patna-800001.  
 Mobile: +91-9525906779, +91-612-2216779.  
 e-mail Id: info@ideationstudio.in www.ideationstudio.in

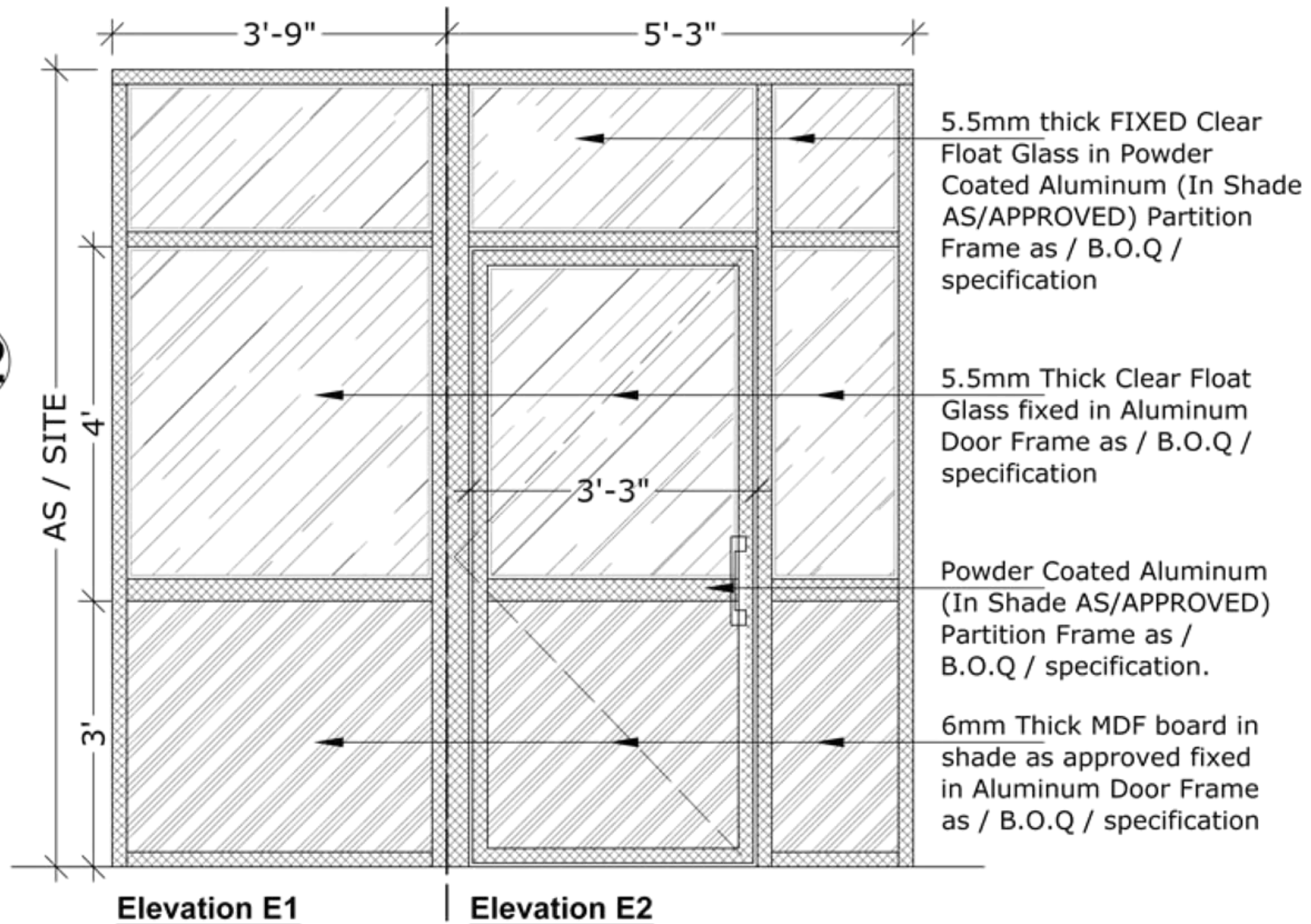
**Services Consultant :**  
**ACE Engineering, Patna**  
 Contact : 7903702565 E-mail : arvind.1358@rediffmail.com

**Structural Consultant :**

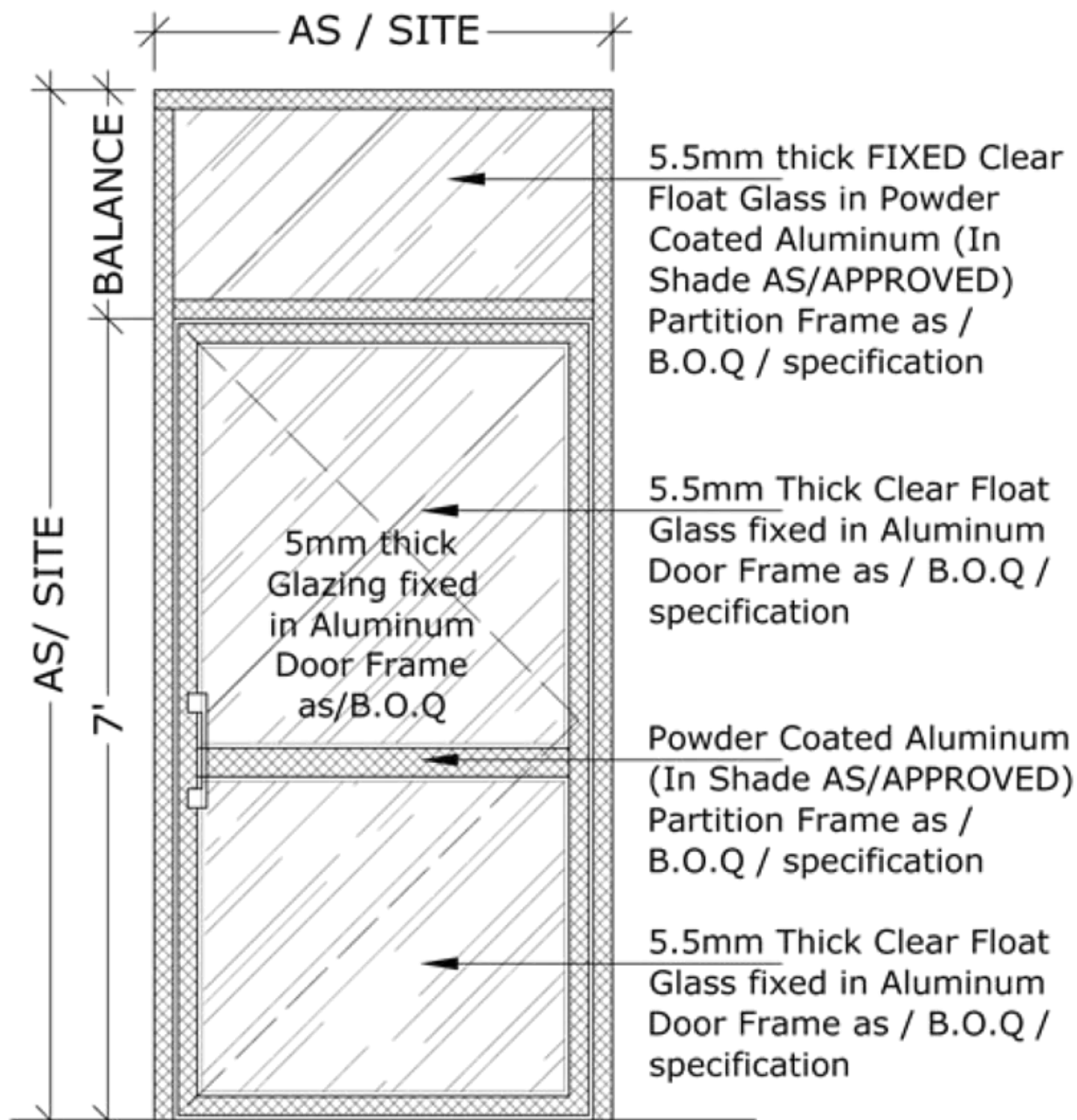




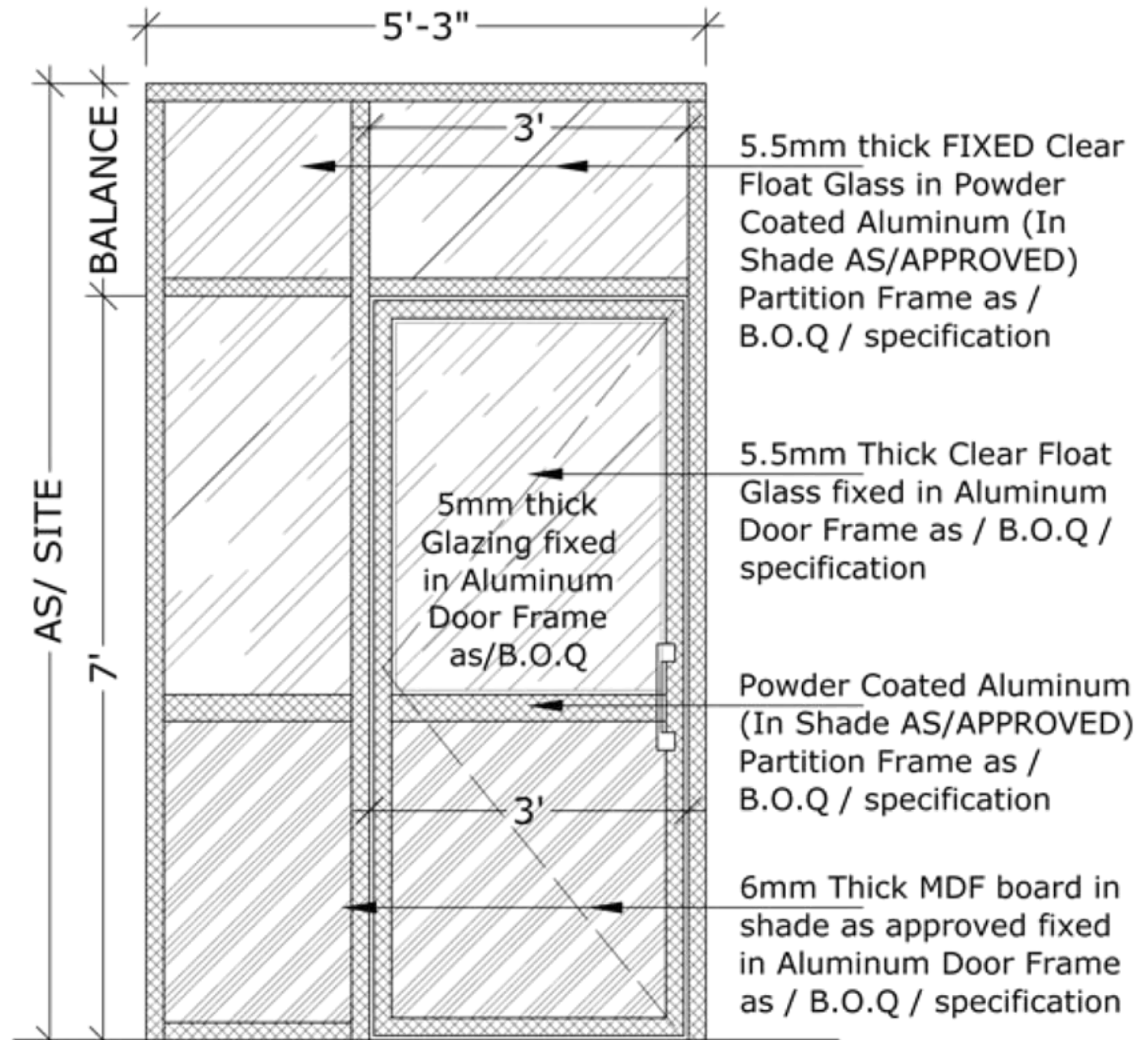
**PLAN : DOOR - D1**  
**PLAN (NTS)**



<p><b>Project :-</b>  <b>ORIENTAL INSURANCE CO. LTD.,</b>          Regional Office, Ranjendra Path,          Kadamkuan, Patna-800003.          Contact: +91-_____</p>	<p><b>Drawing Title :</b>  <b>ALUMINUM PARTITION / DOORS</b>  <b>ELEVATION - E1 &amp; E2 (1st Floor)</b></p> <p>Drg No :- ID-18022-DT-101 A      Rev No :- R1</p>	<p><b>Architect :</b>  <b>IDEATION DESIGN STUDIO Pvt. Ltd.</b>          ARCHITECTS &amp; INTERIOR DESIGNERS          1st Floor, Shambhu Nath Plaza, New Dakbungalow Road, Patna-1.          Mobile: +91-9625906779, +91-612-2216779.          e-mail id: info@ideationstudio.in www.ideationstudio.in  <small>ARCHITECTURE PLUMBING INTERIOR DESIGN LANDSCAPE INTERIOR VISUALIZATION TURNKEY</small></p>
<p><b>Remark :-</b></p>	<p>Approved : AMBUJ      North          Checked : AR      Direction :-          Dealt : KV          Scale : 1" = 12"          Date : 10-09-2018</p>	<p><b>Services Consultant :</b></p>



**Elevation DOOR D3**



**Elevation DOOR D2**



**Project :-**  
**ORIENTAL INSURANCE CO. LTD.,**  
 Regional Office, Ranjendra Path,  
 Kadamkuan, Patna-800003.  
 Contact: +91-\_\_\_\_\_

**Drawing Title :**  
**ALUMINUM PARTITION / DOORS**  
**ELEVATION - D2 & D3 (2nd Floor)**

**Architect :**  
**IDEATION DESIGN STUDIO Pvt. Ltd.**  
 ARCHITECTS & INTERIOR DESIGNERS  
 1st Floor, Shambhu Nath Plaza, New Dakbungalow Road, Patna-1.  
 Mobile: +91-9525906779, +91-612-2216779.  
 e-mail id: info@ideationstudio.in www.ideationstudio.in  
 ARCHITECTURE PLANNING INTERIOR DESIGN LANSING INDIA REAL ESTATE VISUAL IDENTITY TRAINING



**Remark :-**

Drg No :- ID-18022-DT-201 A Rev No :- R1

Approved : AMBUJ  
 Checked : AR  
 Dealt : KV  
 Scale : 1" = 12"  
 Date : 10-09-2018

North  
 Direction >

**Services Consultant :**